

Design your own Kimba inlay

Sewing instructions including pattern

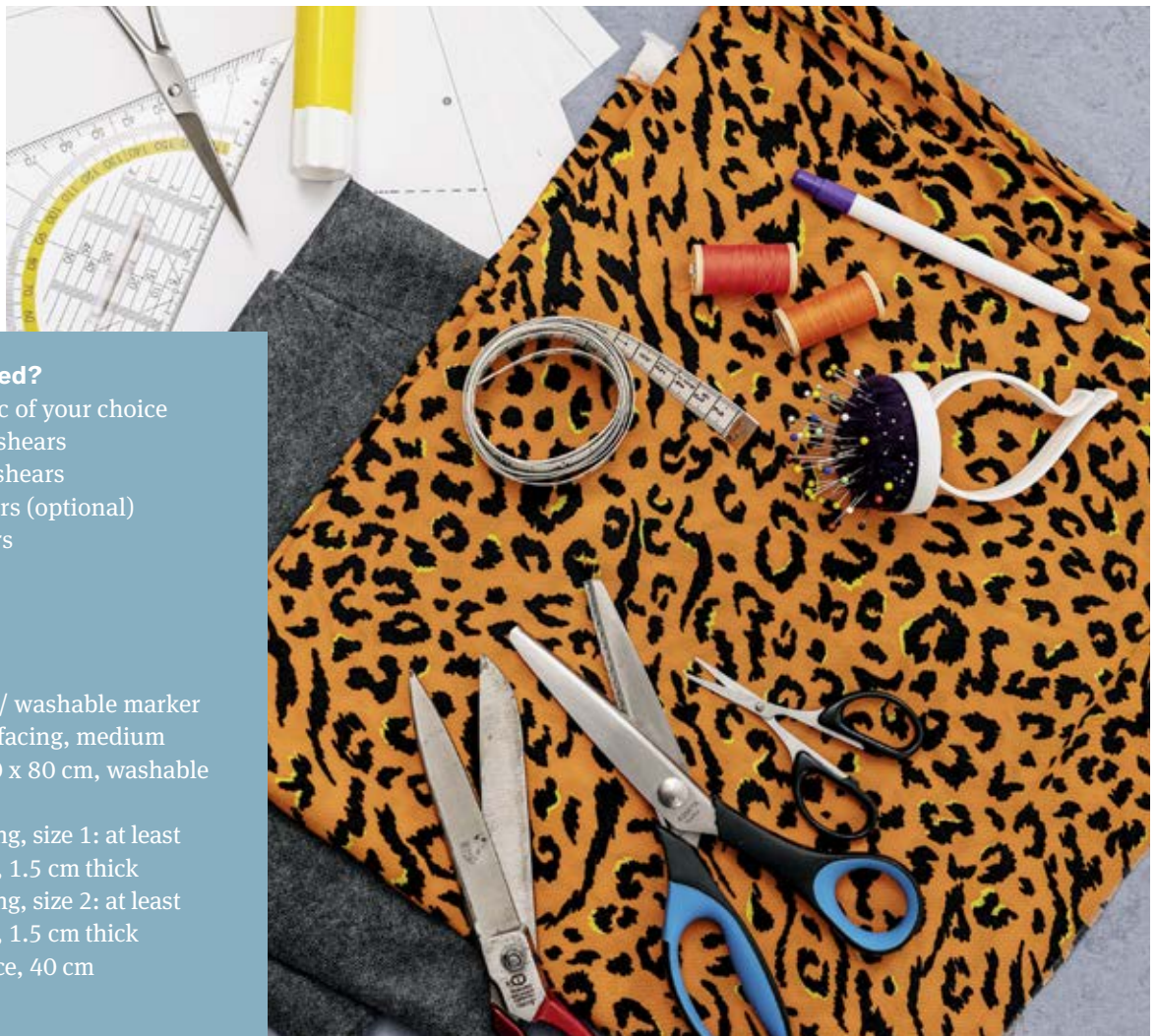
Quality for life



Step by step.

New lining for the Kimba

Sewing is fun – and it also lets you select and combine fabrics to your own personal liking. Ottobock already offers a choice of four different, modern inlays for the Kimba seating unit. If these inlays do not suit your personal taste, or if one inlay is not enough, you can simply tailor your personal, individual inlay at home.



What do I need?

- 120 cm fabric of your choice
- Small fabric shears
- Large fabric shears
- Pinking shears (optional)
- Paper scissors
- Cutter knife
- Metal ruler
- Ruler
- Felt-tip pen
- Fabric chalk / washable marker
- Iron-on interfacing, medium thickness, 10 x 80 cm, washable up to 60 °C
- Foam for lining, size 1: at least 110 x 40 cm, 1.5 cm thick
- Foam for lining, size 2: at least 130 x 45 cm, 1.5 cm thick
- Cord / shoelace, 40 cm

Preparation

- Wash the fabric at 60° C to prevent it from shrinking later
- Allow to dry, then iron

Print out pattern, glue together and cut



1 Print

Print out the pattern (page 12–27) on DIN A4 paper. It is important to ensure in the print program that printing is set to 100 per cent. Please do not select “Scale to paper size”, because this would result in the wrong spacing and lengths.

2 Check

After printing, be sure to use a ruler to check whether 1 cm on the document corresponds to 1 cm on the ruler. If not, adjust your print settings.

3 Cut the edge for gluing

Cut the A4 sheets according to the gluing and cutting marks.

4 Glue together

Glue the pattern together according to the numbers. The places where the sheets may overlap for gluing are shaded.

5 Cut out

Cut out the body, head section and the two rectangles along the cutting line (which will later be the stitching line).

6 Align body pattern

Place the fabric on the work surface, wrong side up, and smooth out any wrinkles. Align the pattern for the body on the fabric, in line with the grain (indicated by an arrow on the pattern). The long edge of the pattern must be exactly parallel to the edge of the fabric.

7 Attach the pattern

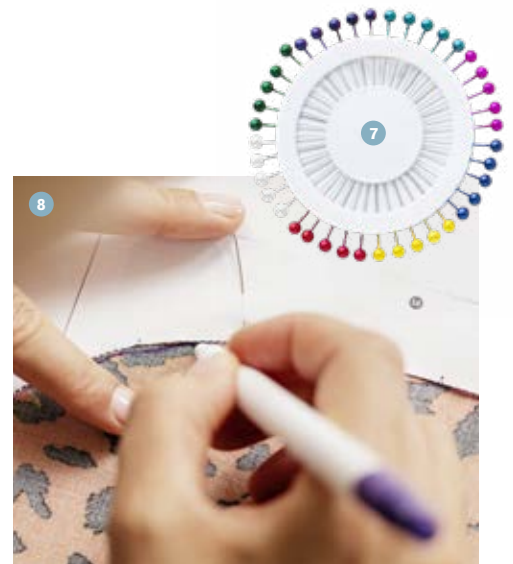
Pin the pattern to the fabric.

8 Mark edges

Use a washable marker / tailor’s chalk to mark the edges. Do not mark the rectangular notches at the foot ends. These should be marked only on the back section.

9 Seam allowance

Measure and mark a seam allowance of 1 cm. Leave the elongated notch between the foot sections without a seam allowance.



Transfer the pattern to the fabric



Cut out the front section



10 Cutting the fabric

Use the pinking shears to cut out the front section along the seam allowance. Do not cut open the notch between the foot ends! Do not remove the pattern yet.

Note: Using pinking shears prevents the fabric from fraying. If none are available, sew a zigzag or overlock seam around the fabric.



11 Cut out placement marks

With the fabric shears, cut a V-shaped wedge approx. 5 mm deep in the seam allowance corresponding to the small V-shaped placement marks in the pattern.

12 Remove the pattern for the body

Take the pattern off the fabric (no illustration).



13 Position the pattern

Align the pattern for the body on the wrong side of the fabric in line with the grain again – the long edge of the body must be exactly parallel to the fabric edge (no illustration).

14 Cut out the ><-shaped rectangles

Cut the paper pattern along the ><-shaped line.

15 Pin it from the foot ends to the midline

Pin the lower half of the pattern on the fabric, up to the marked midline (no illustration).

16 Transfer rectangles and >< shape to the fabric.

Fold up the paper wings to transfer the rectangle and the >< shape to the fabric using a pencil/tailor's chalk. Important: The ><-shaped marks must be at a 45° angle to the rectangle.

17 Draw the outlines and the V-shaped placement marks

Use a washable marker / tailor's chalk to draw the outlines of this lower half. This time, make sure the rectangular notches at the foot ends are marked on the fabric. The same applies to the V-shaped placement marks.



Transfer the back section to the fabric



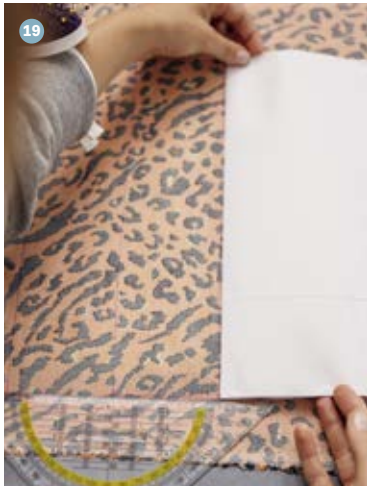
18 Measure the extension

Now fold the pattern over at the midline. From the midline, measure 8 cm as an extension of the side edges of the body and draw a line parallel to the midline. Now measure 8 cm again as an extension of the side edges and mark so the body is extended by a total of 16 cm in the middle. This will later be the closure of the cover.



19 Shift the pattern

Lift the pattern from the fabric and place the midline of the pattern on the edge that is 16 cm from the original midline. Ensure that all lines are still parallel, not oblique.



20 Attach the pattern

Now pin on the upper part of the pattern.

21 Mark the seam allowance

Measure and mark the seam allowance 1 cm around the body and transfer the V-shaped placement marks.

Move the pattern



22 Cut the fabric

Use the pinking shears to cut along the seam allowance mark. Do not cut out the notch and the rectangular recesses on the foot section!

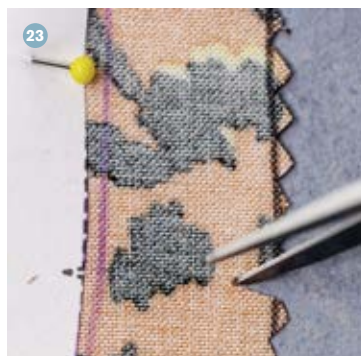
23 Cut the placement marks

With the fabric shears, cut the small V-shaped placement marks in the seam allowance of the pattern in a V approx. 7 mm deep.

24 Divide the back section

Cut along the newly created line between the two former midlines of the pattern, dividing the back section into two.

Cut out the back section





Mark and cut the head section

25 Attach and pin pattern for the head

Fold the fabric double so the two right (outer) sides of the fabric face each other. Align the pattern for the head with the grain on one of the wrong sides of the two layers of fabric – the imaginary midline of the head must be exactly parallel to the fabric edge. Pin the pattern to the fabric. Ensure that there are no wrinkles in the two layers.

26 Mark the pattern

Draw the outline of the pattern with a washable marker / tailor's chalk.

27 Measure the seam allowance

Then measure and mark a 1 cm seam allowance around the pattern.

28 Cut the fabric

Use the fabric shears to cut through both layers at the same time along the seam allowance mark.

29 Cut the placement marks

With the fabric shears, cut the small V-shaped placement marks in the seam allowance of the pattern in a V approx. 7 mm deep.

Sew the head section



30 Pull out some of the pins

Now loosen the pattern. Always take only one pin from the pattern at a time and then immediately pin the two layers of fabric below together again so they remain exactly in place. Do not pin the tapering edge that points down to the body section (the bottom edge in the picture).

31 Hem the edges

Fold over the edges that point down towards the body section. Fold them along the marked line and pin in place; stitch a hem approx. 0.5 cm from the edge. This edge is marked in the pattern with a separate dashed line.

32 Stitch the head sections together

Now stitch the head sections together, but leave open the hemmed edge that points down to the body.



33 Cut the iron-on interfacing to size

Cut two rectangles measuring 4 x 23 cm from the iron-on interfacing using the printed pattern. We recommend placing a sheet of paper under the interfacing because the felt marker can leak through the material onto the work surface.



34 Position and iron on the interfacing

Iron the two rectangles of iron-on interfacing onto the already marked notch on the foot section. Make sure the adhesive side faces the fabric!

If you are unsure which is the adhesive side, put some tissue paper between the iron and the interfacing. Iron each part on firmly for approx. 15 seconds at a high setting. Allow to cool for approx. 1 minute. Check whether the interfacing detaches easily. Repeat the process if necessary.



Reinforce the back section with iron-on interfacing

35 Mark the notch again

After ironing on the interfacing, mark the notch again using the pattern.

Note: If you have chosen a fabric that frays easily, you can also use interfacing to reinforce the rectangular notches for the foot loops (same procedure as step 34).

Note: If you are making your own foam lining, you can ignore the steps for adding a rectangular notch in the foot sections (steps 36–43).



36 Mark and cut the small rectangles

Cut two rectangles measuring 5 x 7 cm (see printed pattern) from the fabric with pinking shears.

37 Align rectangles

Place one of the rectangles under the back section level with the mark for the rectangular notch and align it approximately in the middle. The two right (outer) sides of the fabric should face each other.

38 Attach

Attach the rectangle from above with pins. Ensure that the fabric is not wrinkled.

39 Stitch

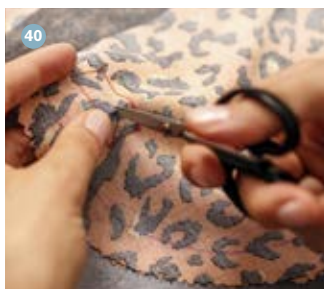
Stitch the rectangle precisely along the rectangular mark (not along the inner >—< pattern!).



Mark, cut out, attach and stitch rectangles

40 Cut out the rectangle

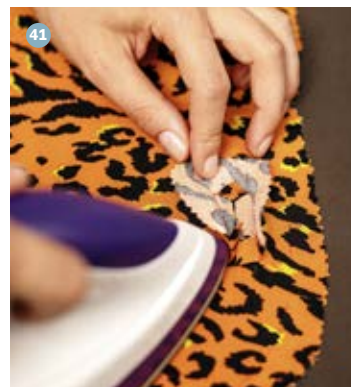
Use the small fabric shears to cut both layers along the >—<-shaped mark up to approx. 0.5 mm from the seam. Make sure you do not cut into the seam.



41 Fold and iron the seam allowance

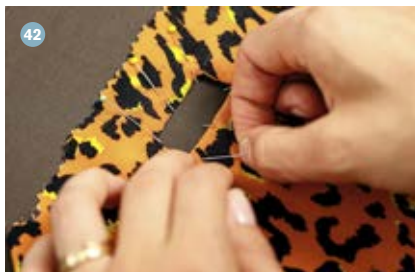
Fold and iron the seam allowance of the rectangle from the right side of the back section. This makes it easier to turn it inside out.

Cut out the rectangle, turn it inside out and iron it in position



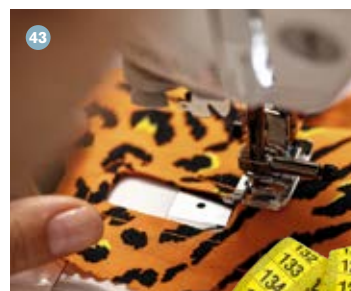
42 Turn inside out

Pull the rectangle through the opening, iron it flat on the wrong side of the back section and pin it in place.



43 Stitch together

Stitch at a distance of approx. 0.5 cm from the notch.



44 Fold over and attach the back sections

Halfway along, fold back the 8 cm extensions of the original midline on the back sections and attach so the edge of the fabric is on the marked midline, then pin in place.

45 Stitch the hem of the back section

Stitch at a distance of approx. 1 cm.

46 Place the back sections one over the other

Now place the two marked midlines one over the other, with the upper back section below the lower back section (viewed from the right side of the fabric).

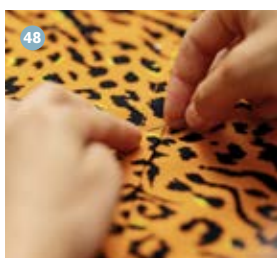


47 Stitch the back sections together

Pin the two sections of fabric together and stitch parallel to the outer edge (this makes the final stitching easier).

48 Place the back sections one over the other

Pin the two overlapping back sections together from the right side of the fabric.



Sew the back sections together



49 Stitch around the edge

On the front and back sections, fold over and pin the edge facing the head section and stitch at a distance of approx. 0.5 cm.

50 Place front and back sections one over the other

Place the right sides of the front and back sections together and pin them in place. Make sure that the V-shaped marks are placed over one another.

51 Place the front and back sections together

Pin the front and back sections together. Pin the notches of the front and back sections together. Test: Does an inserted needle match the same place on the mark underneath it? If not, adjust it.

52 Stitch together

Now stitch the front and back sections and the notch together along the mark. Leave the seam facing the head section open.



Put the front and back sections together

53 Cut the notch apart

Cut the notch apart along the imaginary midline so that both halves have a small seam allowance.

54 Open and iron the seam

Fold open and iron the seam allowances of the body and head sections.

55 Turn onto the right side

Now turn the body and head section to the right side of the fabric

56 Pin and stitch the head and body sections together at the side line

Pin the head and body together to overlap about 0.7 cm so the seam of the head section faces the seam of the body section. Pin and stitch the left and right edges (1.5 cm in both directions from the side seam). This ensures that the straps can be used.

57 Pin the head and body sections together in the middle and stitch

Pin the head and body sections together with around 0.7 cm overlap so the seam of the head section faces the seam of the body. Pin together and stitch 1 cm to the left and right of the midline. This ensures that the straps can be used.

Note: The cover is now ready and can be pulled over the original lining. If you want to make your own lining, proceed to step 58.



Put the head and body together

58 Position the pattern

Place the patterns for the head and body sections on the foam and position them such that the edges of the head and body sections touch each other.

59 Pin the pattern

Pin the pattern to the foam.

60 Transfer the pattern

Use the felt-tip pen to mark around the outer edge of the pattern.

61 Mark the cutting lines for the straps

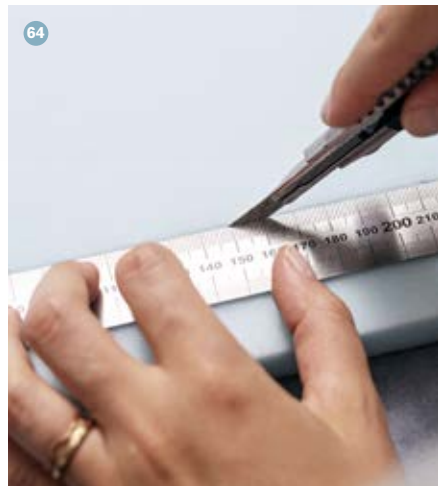
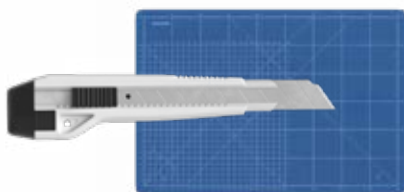
Draw long dashes, one on the left and one on the right, at the points where the patterns for the body and head sections meet. Start drawing the dashes 2.5 cm from the outer line, and end them 1 cm short of where the midline should be. Later, this is where you can pull the shoulder straps on the buggy through the lining.

62 Remove the pattern

Remove the pattern (no illustration).



Transfer the pattern to the foam



63 Move the outline inwards

Once you have marked the outline on the foam, measure 1.5 cm inwards and draw a parallel line all the way round. This makes the lining 1.5 cm smaller on all sides so that it definitely fits inside the cover.

Note: If you have used a different thickness of foam, follow this rule of thumb: the distance between the two lines should be equal to the thickness of the lining so that it fits comfortably into the cover. You may need to adjust the distance slightly if the foam is particularly hard or soft.

64 Cut out with the cutter knife

Use a sturdy ruler (e.g., a metal ruler) and a cutter knife to cut out the inner outline.

65 Cut the slits for the shoulder straps

Using the cutter knife, make incisions along the dashes you marked in step 61. These slits are for the shoulder straps. Important: Be very careful not to cut too close to the edge.

66 The lining is ready

You can now pull the cover over the new lining.

Note: If you like, you can tie the finished inlay in place in the Kimba buggy. If you're not using the back straps on the Kimba but you want your new inlay to stay in place securely, you can feed a strong cord or a shoelace (40 cm long) from front to back through the strap holes on the cover and the foam. Then tie them together on the rear of the back support.

Cut out the foam



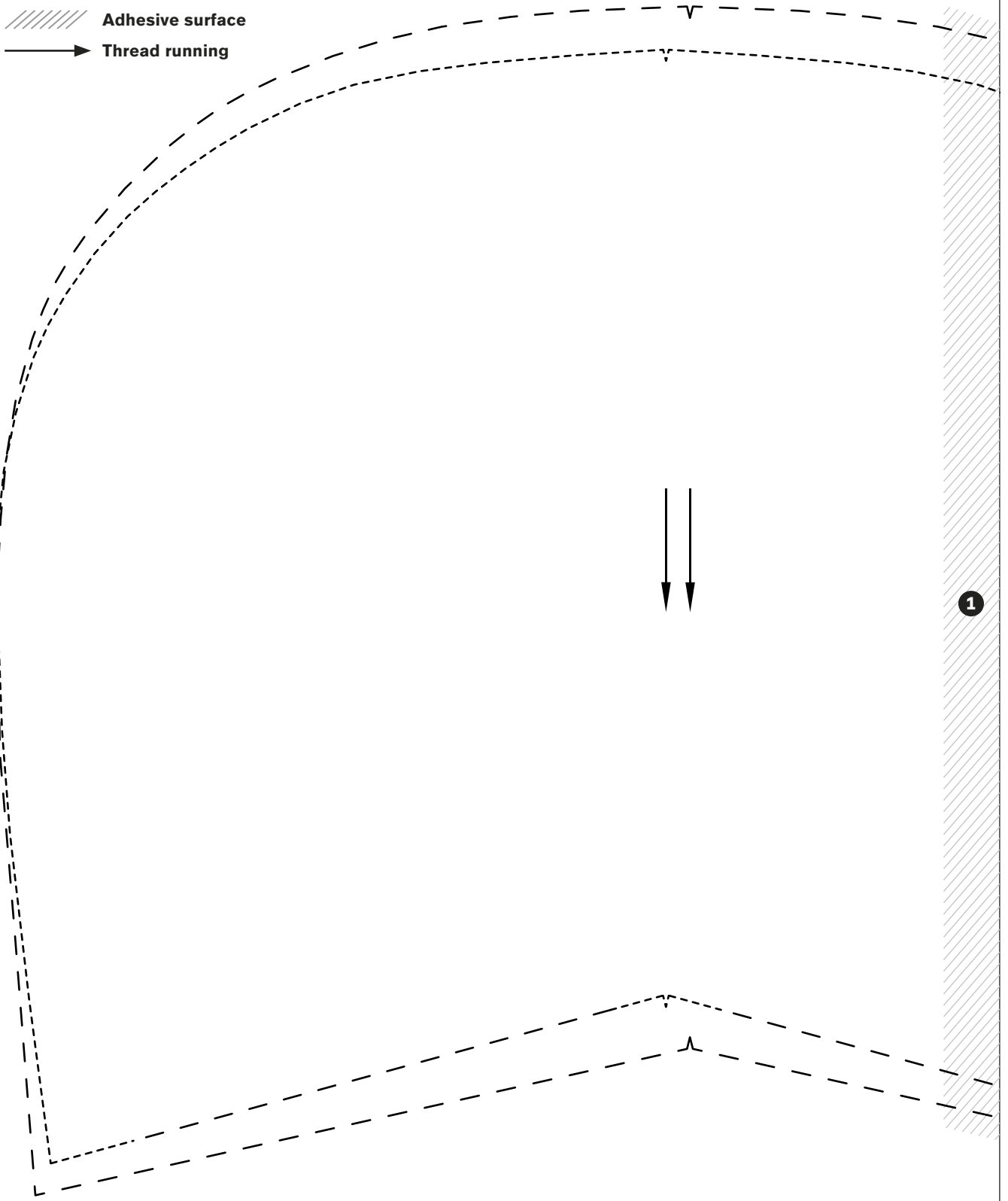
Notes

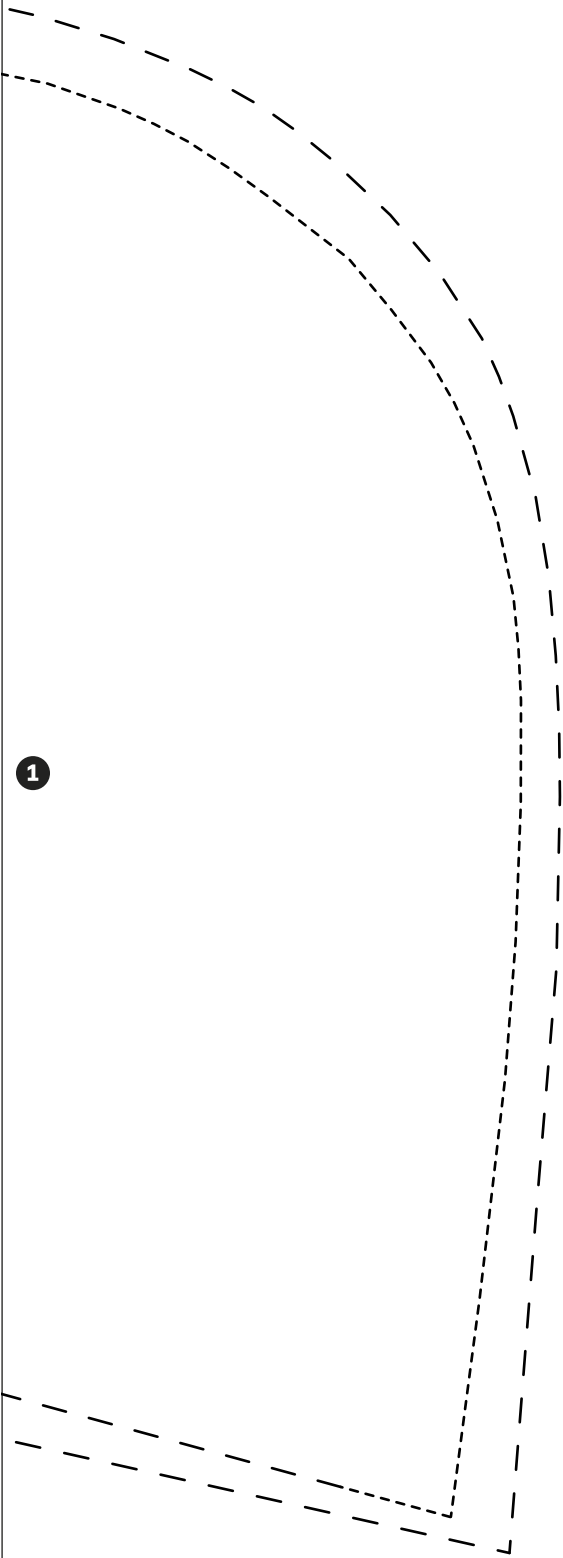
A series of horizontal dotted lines for taking notes, spanning the width of the page below the header.

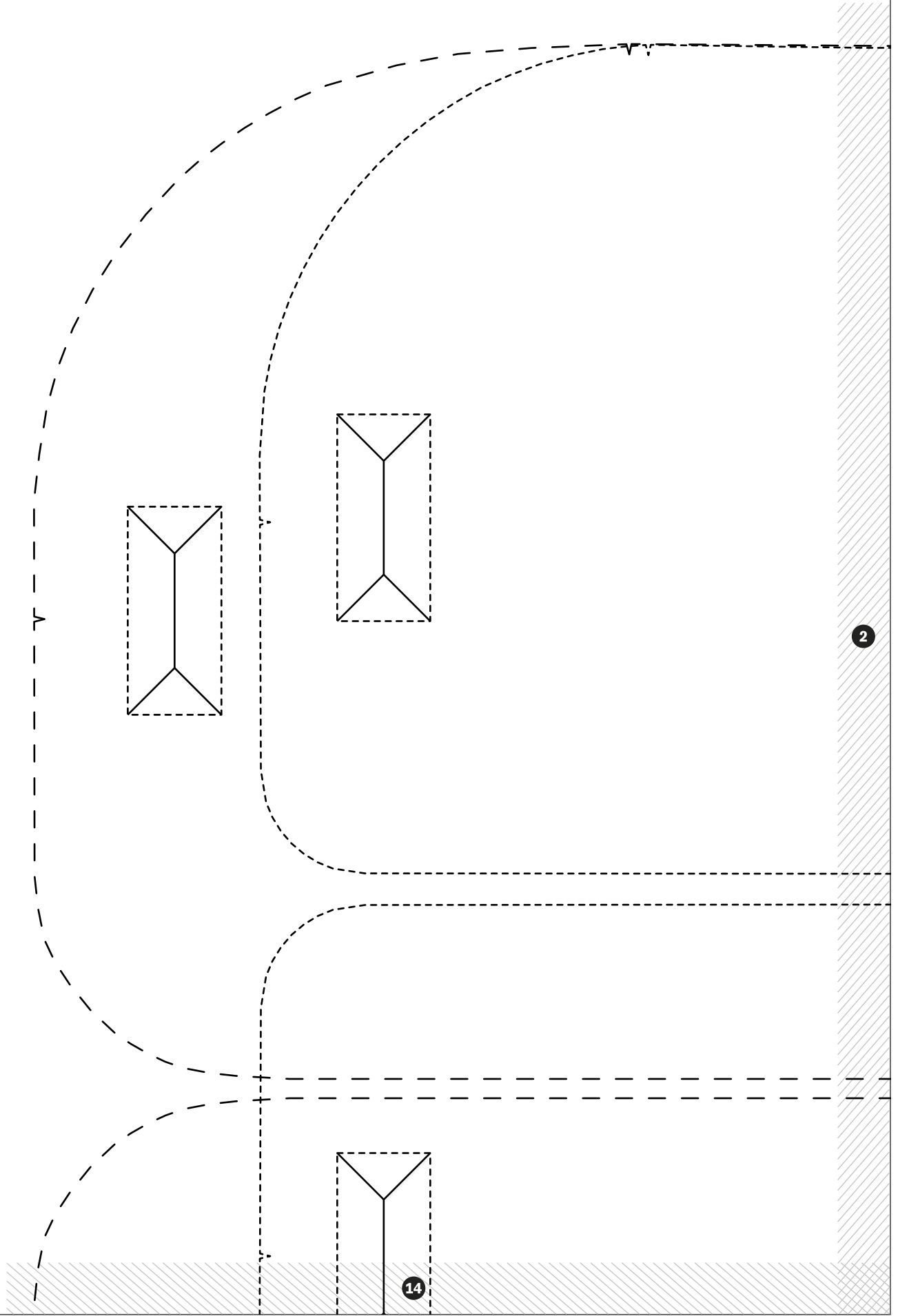
Note: Please print the cut pattern in A4 format with a scale of 100%. For control, you will find on this side a centimeter. Balance this with a ruler. Now cut along the marked lines and glue then the surfaces with the identical numbers on top of each other.

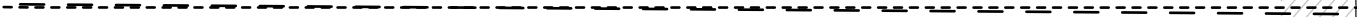


- **Seam line size 1**
- - - - **Seam line size 2**
- **Cut**
- ////// **Adhesive surface**
- > **Thread running**



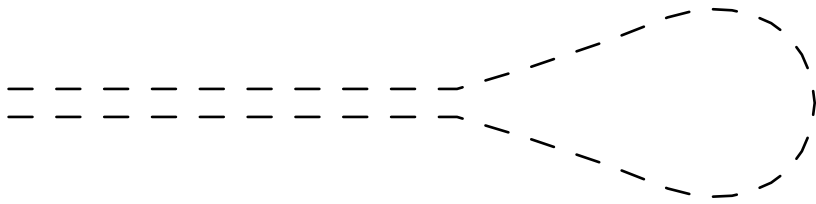
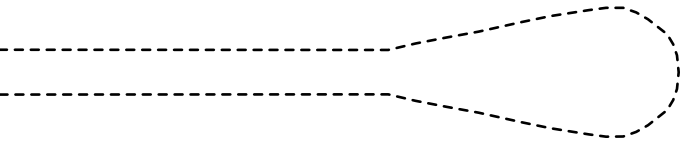




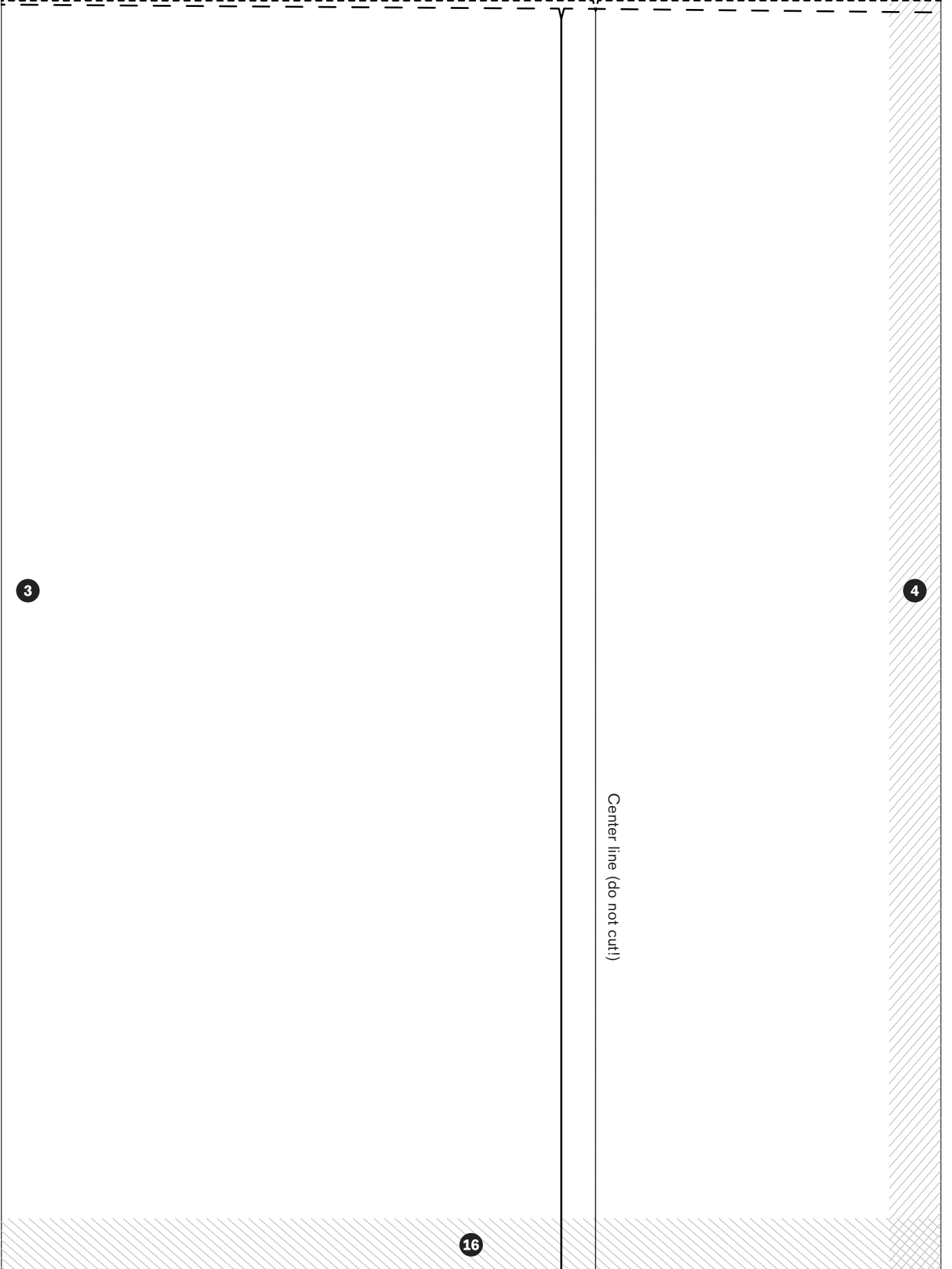


2

3



15

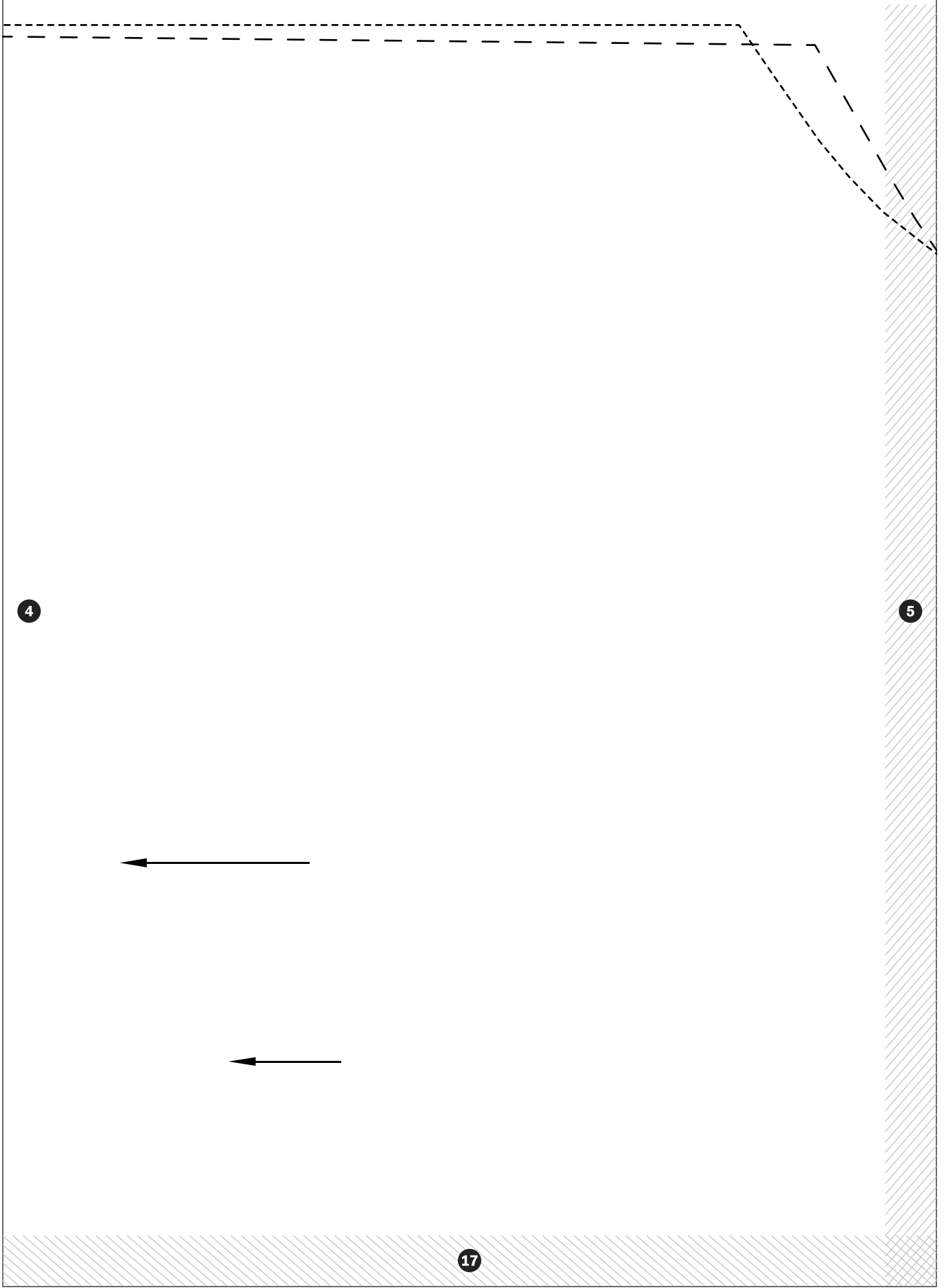


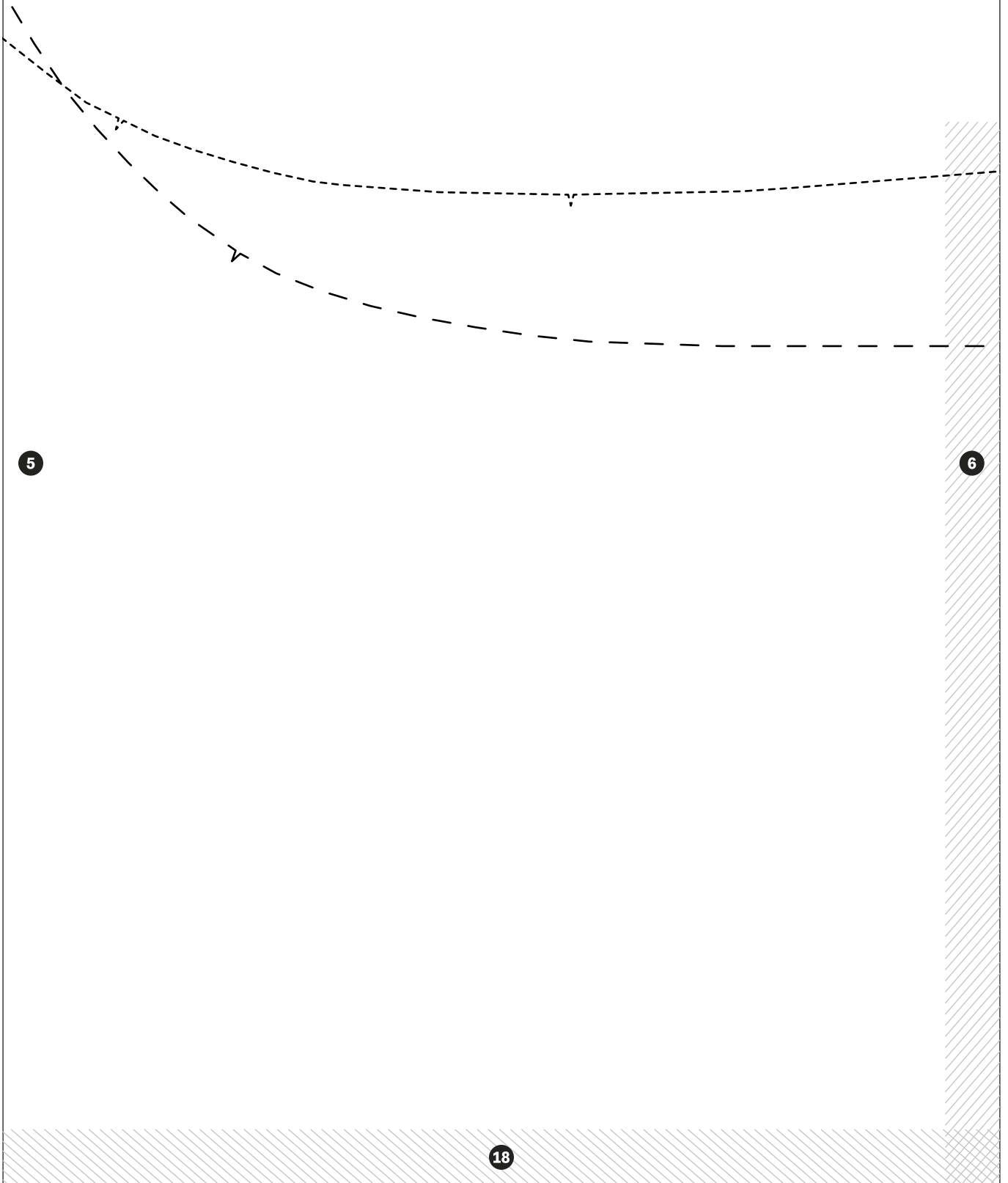
3

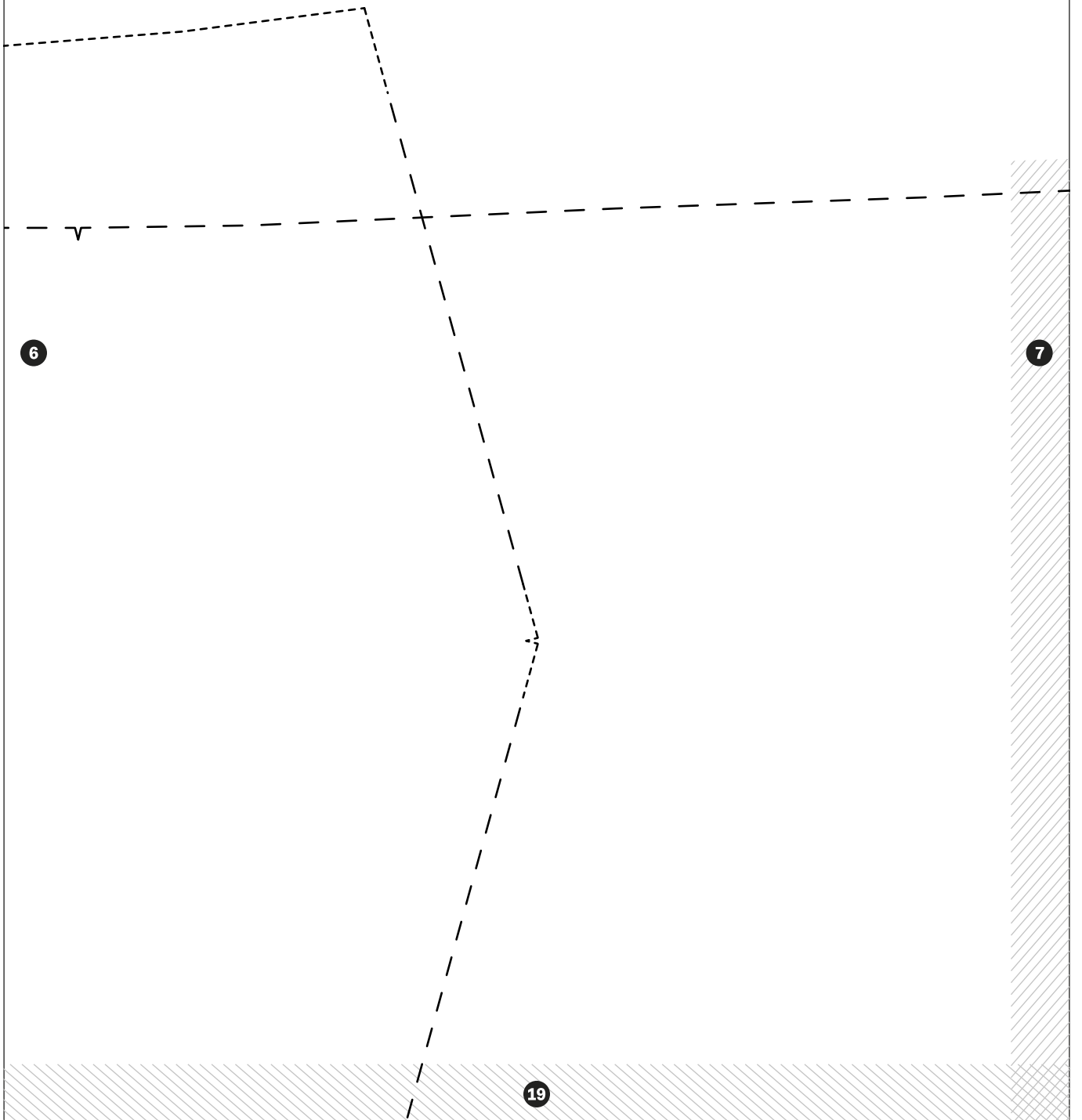
4

Center line (do not cut!)

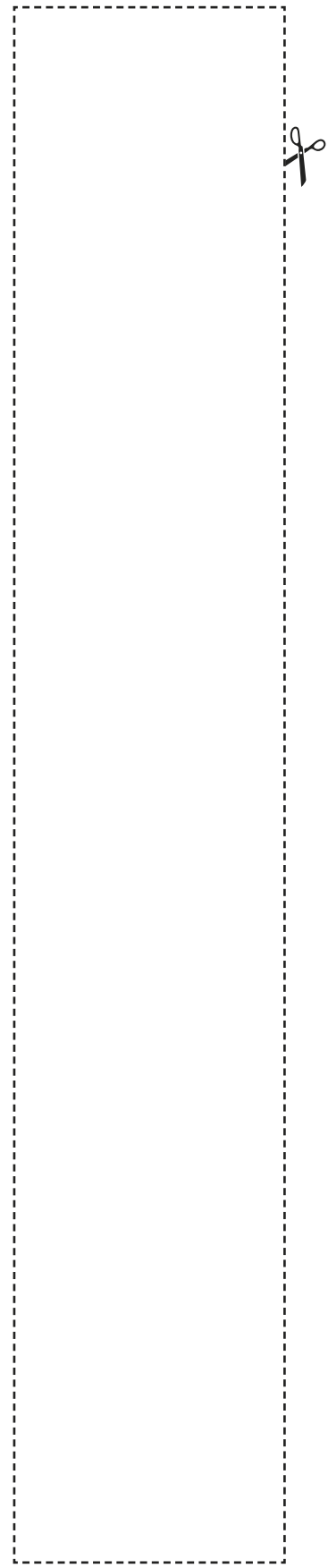
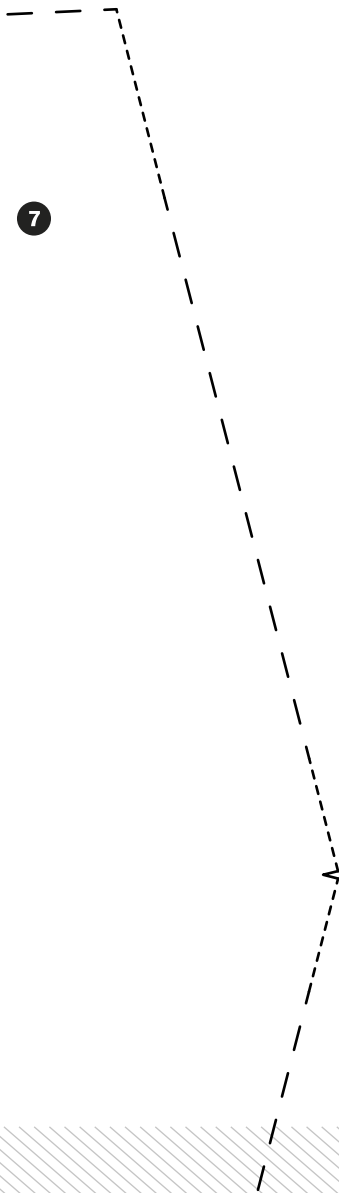
16

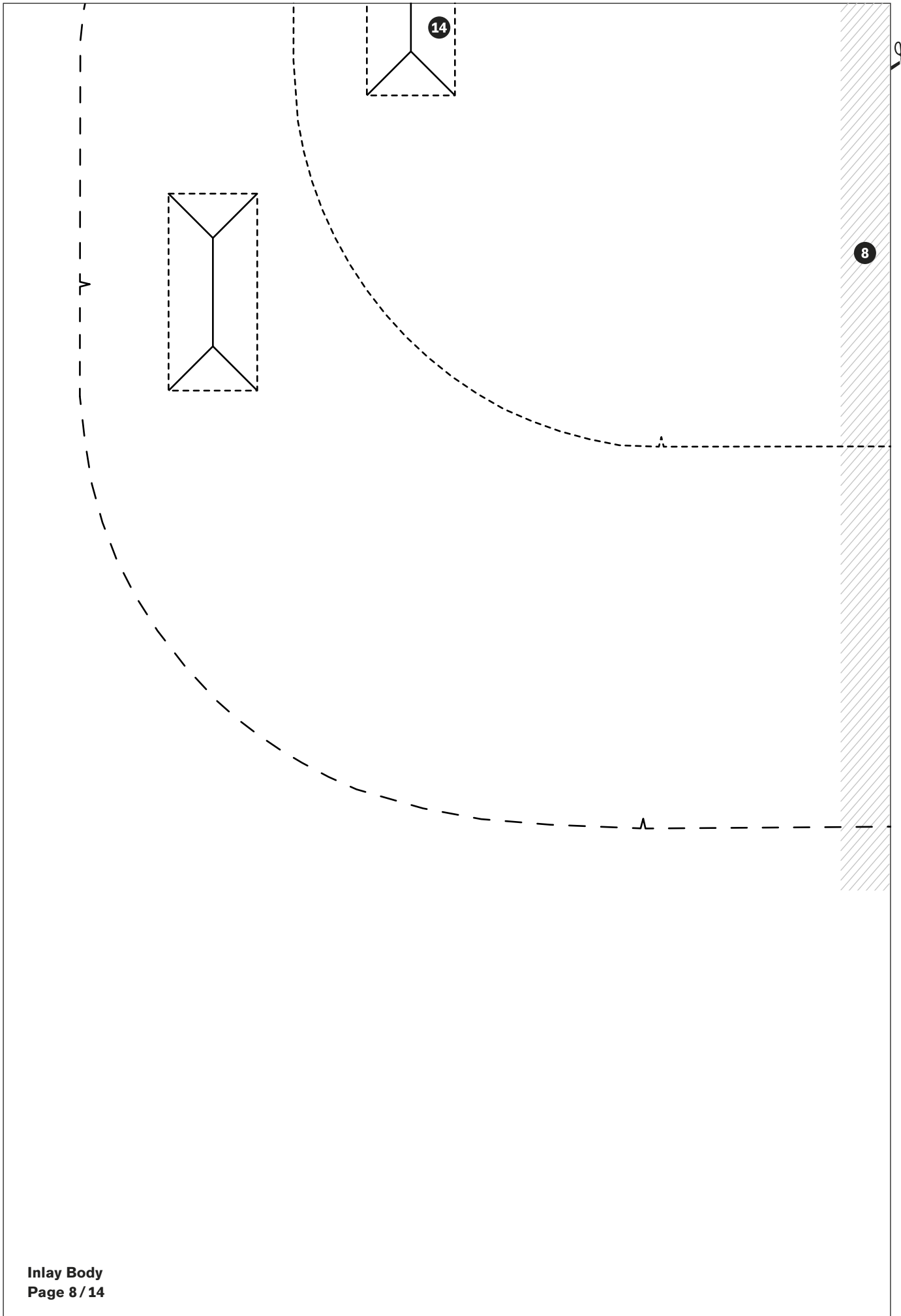


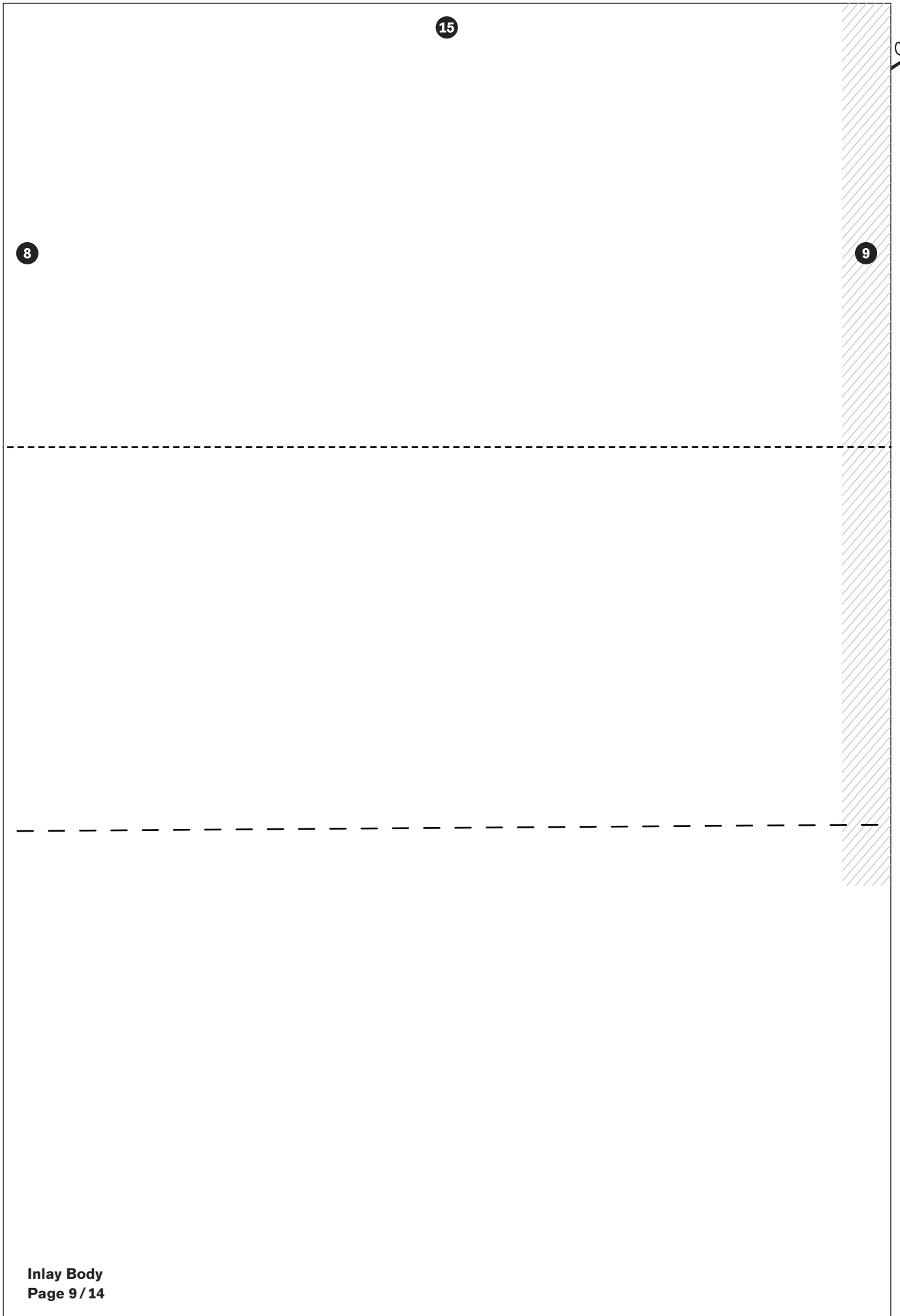




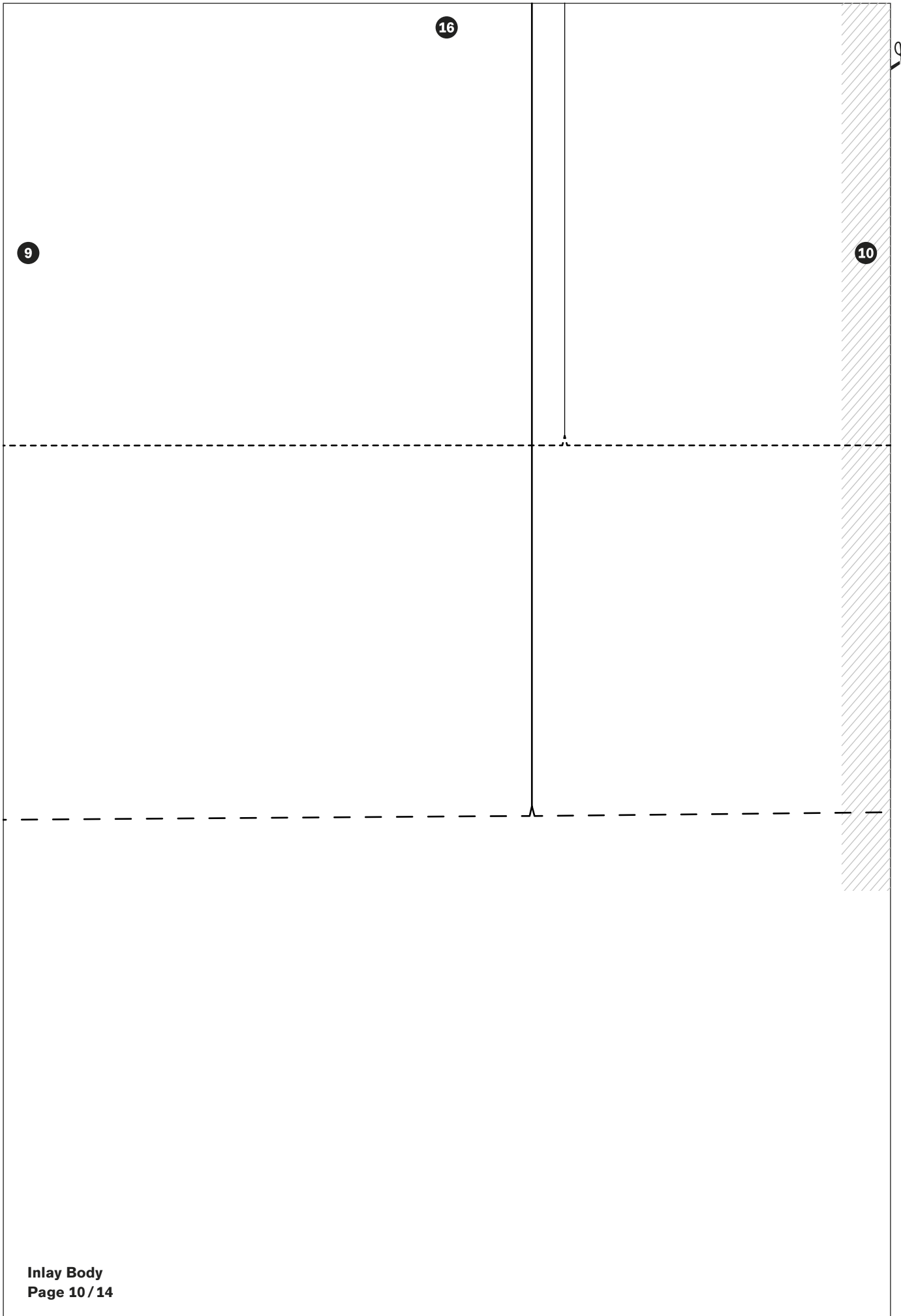
Stencil for ironing fleece: Please cut with of the right-hand template two ironing fleeces in the 4 x 23 cm size.

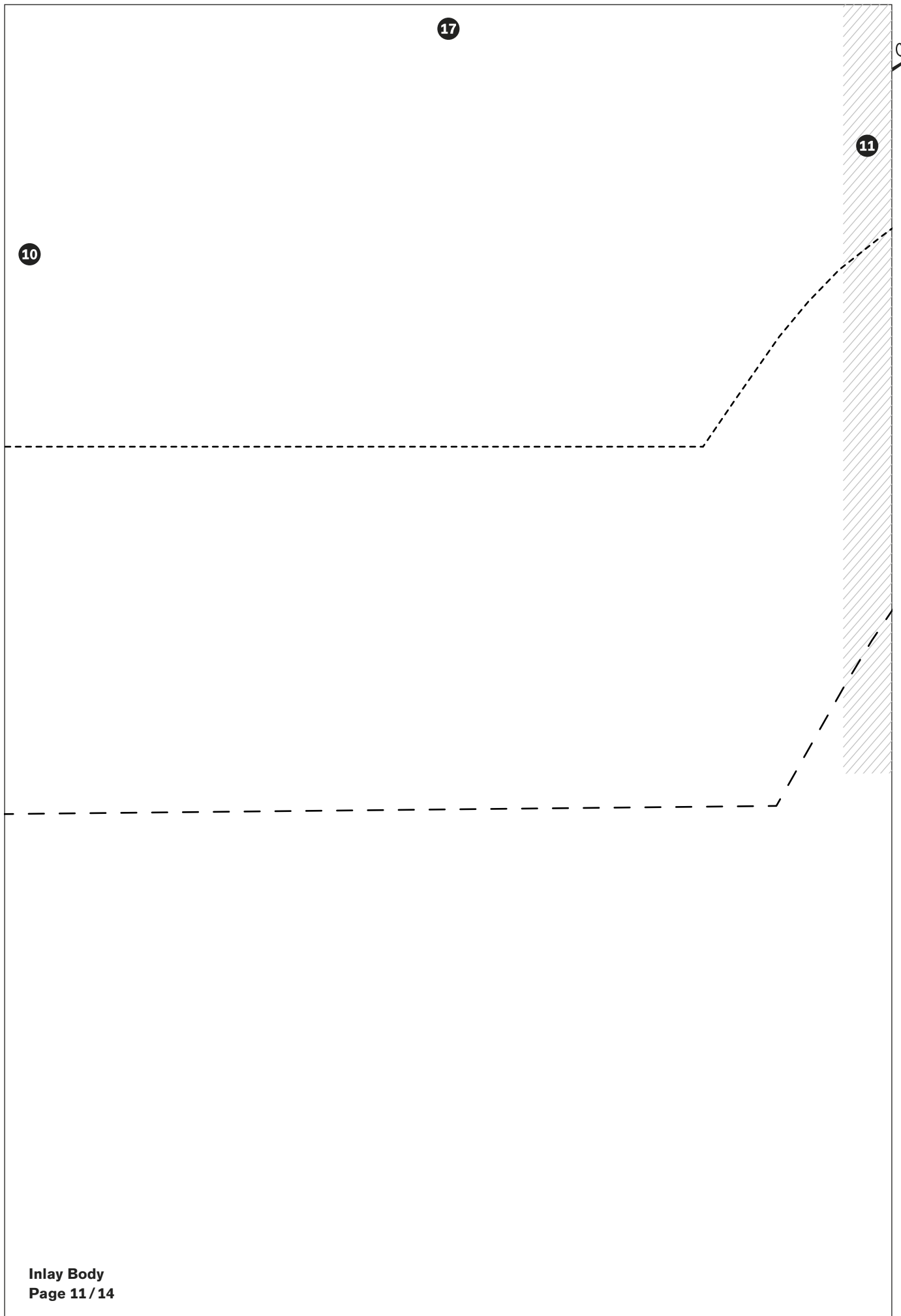


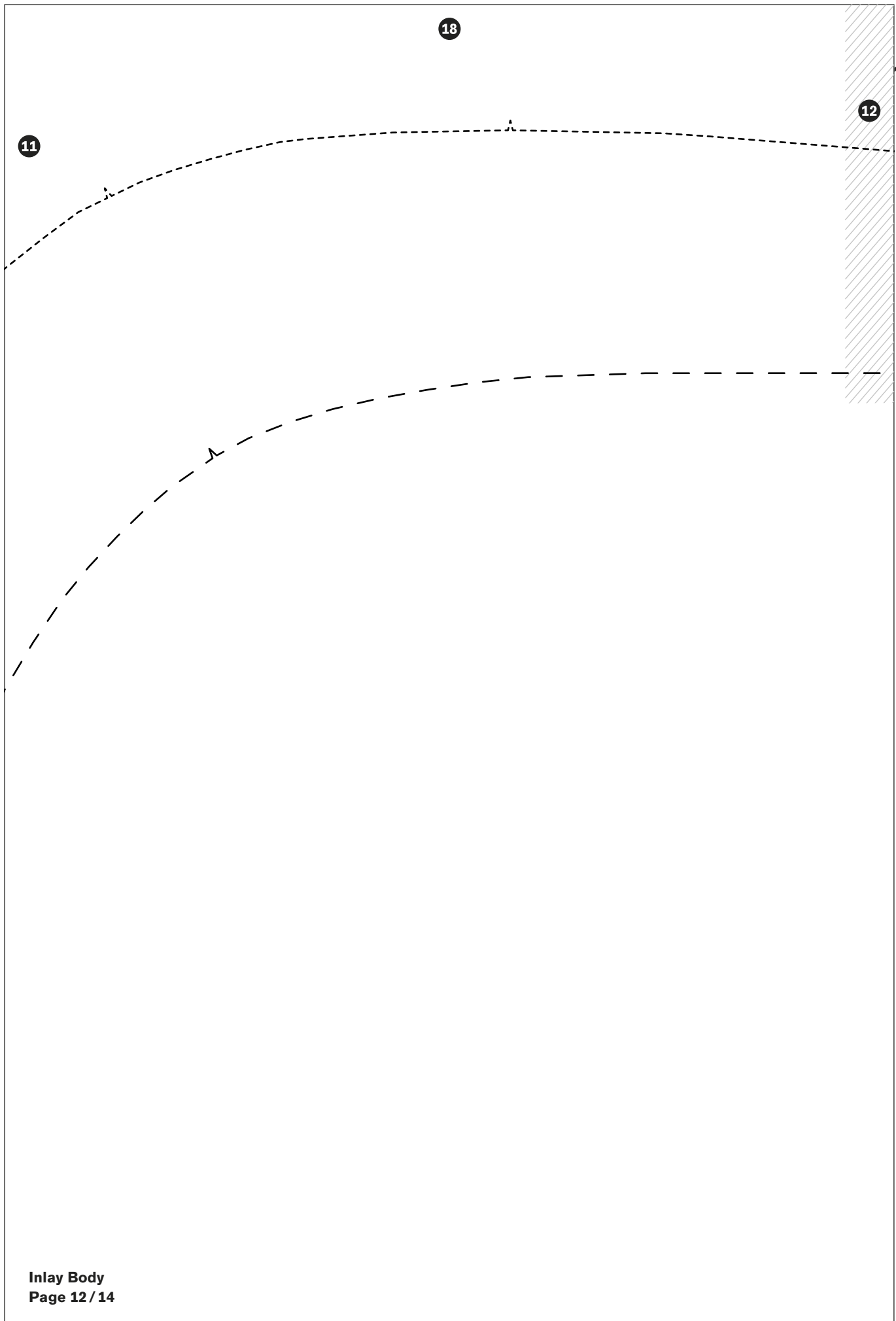


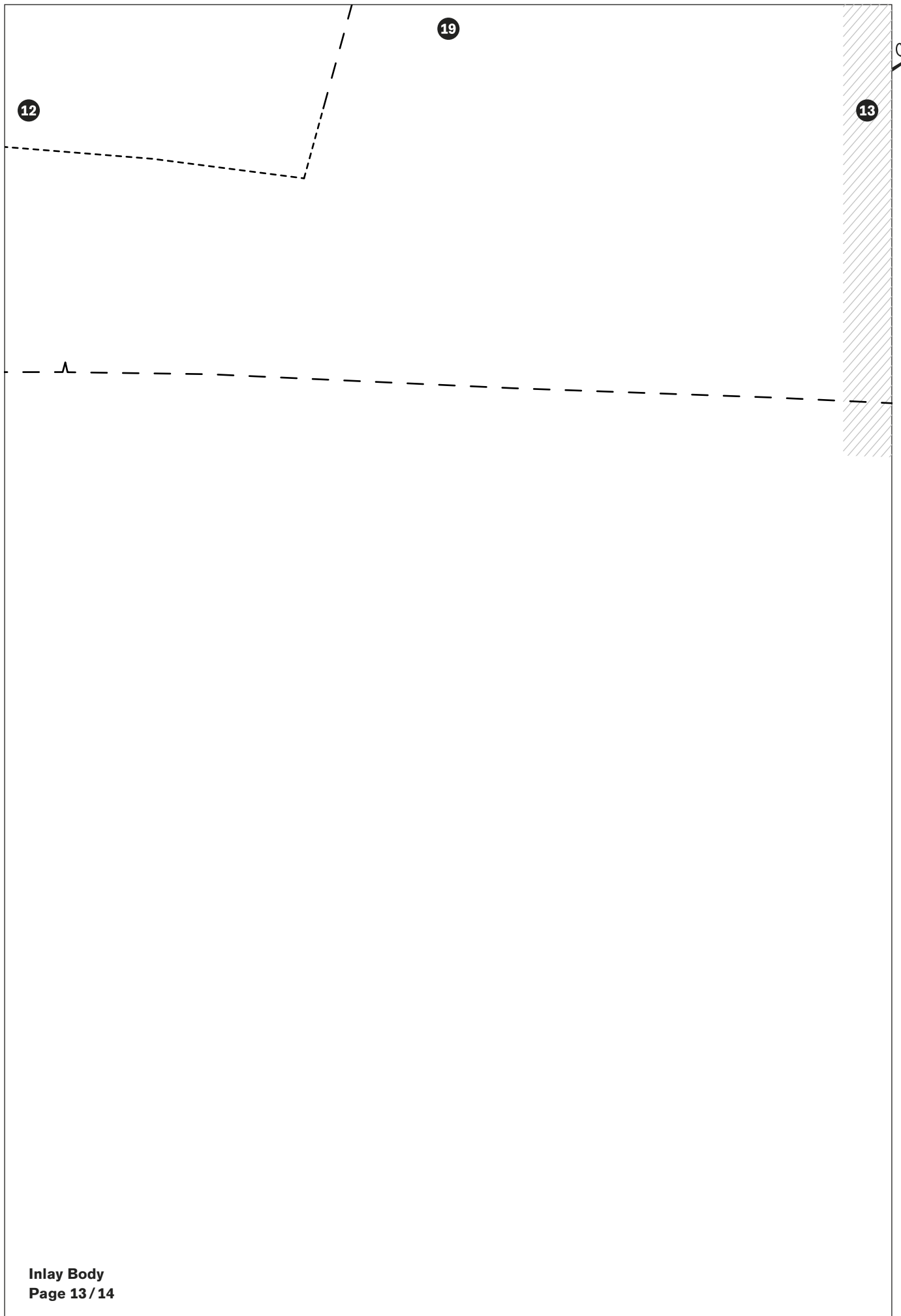


Inlay Body
Page 9 / 14









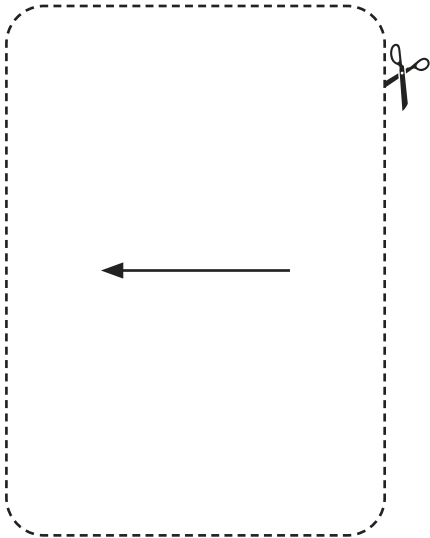
Inlay Body
Page 13 / 14

13

20



Template for fabric rectangles: Please cut with of the stencil shown below, two rectangles of the upholstery fabric in the format 5 x 7 cm.





Otto Bock Mobility Solutions GmbH
Lindenstraße 13 · 07426 Königsee-Rottenbach/Germany
www.ottobock.com